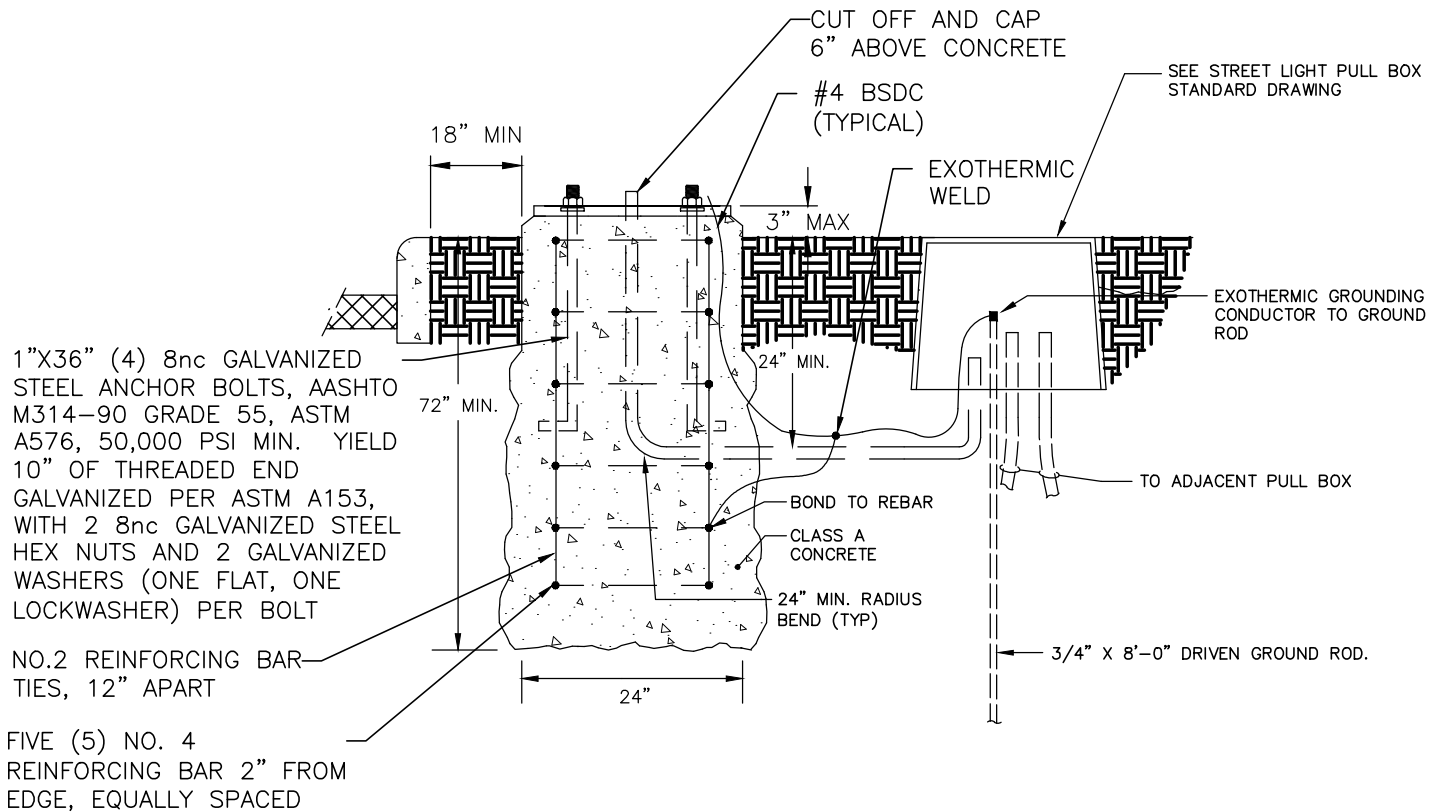
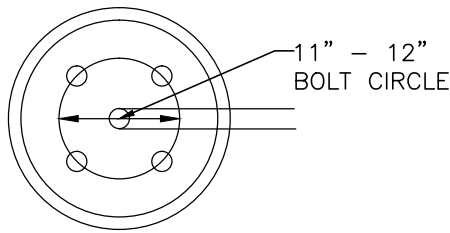


ANCHOR BOLT PATTERN MUST BE SQUARED TO ROADWAY AND SHALL COMPLY WITH POLE MANUFACTURES ANCHOR BOLT PATTERN AND REQUIREMENTS. CENTER OF BOLT CIRCLE SHALL BE ON CENTERLINE OF FOOTING.



NOTES:

- 1) ANCHOR BOLT PATTERN MUST BE SQUARED TO ROADWAY AND SHALL COMPLY WITH POLE MANUFACTURES ANCHOR BOLT PATTERN AND REQUIREMENTS. CENTER OF BOLT CIRCLE SHALL BE ON CENTERLINE OF FOOTING.
- 2) ALL MATERIALS AND LABOR TO BE FURNISHED BY CONTRACTOR
- 3) ALGIN ANCHOR BOLTS TO BE PARALLEL TO STREET
- 4) COF STREET DEPARTMENT INSPECTION MUST BE APPROVED BEFORE CONCRETE POUR AND AT COMPLETION.
- 5) FINISH SHALL BE SMOOTH & FREE OF VOIDS.
- 6) THIS DETAIL TO BE USED IN DOWNTOWN FRANKLIN GATEWAY CORRIDORS AND CONNECTOR STREET.
- 7) PROVIDE POLE LENGTH REQUIRED BY SOIL CONDITIONS AND POLE / LUMINAIRE (INCLUDING WIND LOADING.)
- 8) WHERE REQUIRED BY SITE CONDITIONS, PROVIDE SPREAD-TYPE FOOTING.
- 9) FOUNDATIONS SHALL BE DESIGNED BY LICENSED ENGINEER

N.T.S

**CITY OF FRANKLIN**

30' LIGHT POLE - BASE DETAIL

**DWG. NO. L-8**

EFFECTIVE DATE: 7/1/2017

*Paul P. Hoyle* 7/1/2017  
CITY ENGINEER DATE

*Stephanie Martin* 7/1/2017  
ASST. DIRECTOR OF ENG. DATE